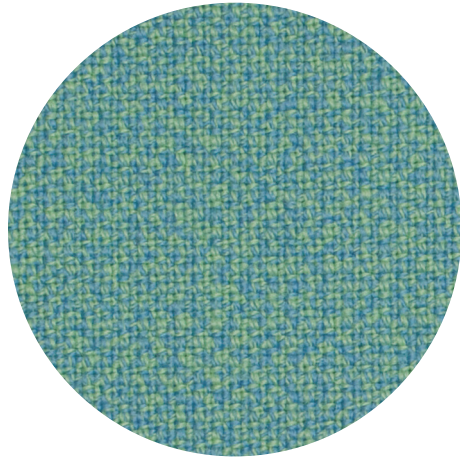
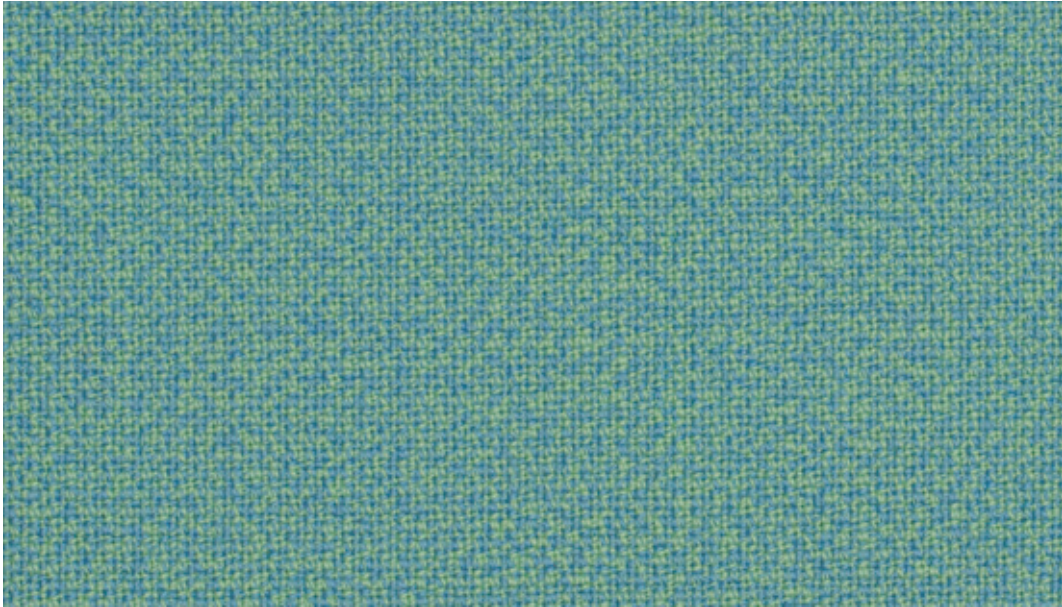


Q
e
T
i
Q

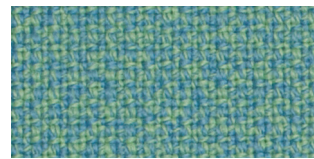


FAME HYBRID™

by Gabriel



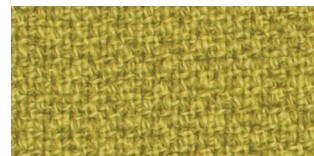
2601



2601



1101



2901



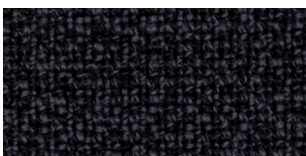
1201



1501



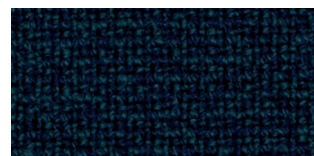
2801



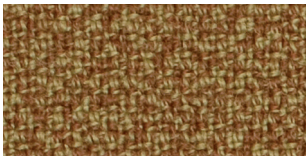
1301



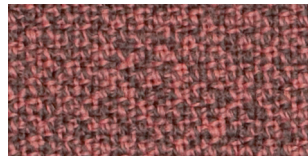
1401



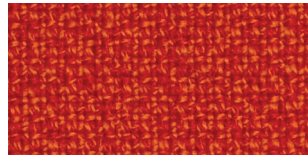
2701



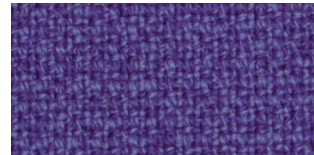
1801



2101



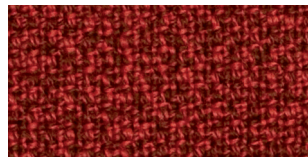
1901



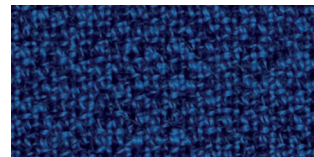
2301



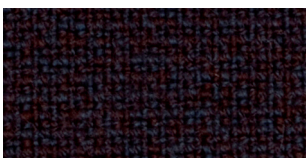
1601



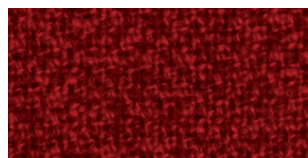
2001



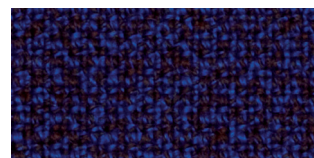
2401



1701



2201



2501

Please be aware that the PDF colour shades can appear different from the real fabric colours.

FAME HYBRID™

| | | |
|---|--|--|
| Design no. | 2479 | |
| Fields of application | soft seating · contract | |
| Material | wools of New Zealand · polyamide | 95 % · 5 % |
| Weight | 630 g/lm · (20.32 oz/lin.yd.) | |
| Width | 140 cm · (55") | |
| Abrasion resistance | rubs · EN ISO 12947-2 (Martindale) | 150,000 |
| Pilling | EN ISO 12945-2 | 4 |
| Colour fastness to light | scale 1-8, max 8 · EN ISO 105 - B02 | 5-7 |
| Colour fastness to rubbing | scale 1-5, max 5 · EN ISO 105x12 (wet/dry) | 4-5 |
| Maintenance | dry cleaning | P(S) |
| Flammability: | EN 1021 1&2 · BS 5852 0&1 · CA TB 117-2013. Will also pass other flammability standards. Flame retardant performance is dependent upon the foam used. | |
| US ACT | <ul style="list-style-type: none"> ☀ AATCC 16 Light fastness ☛ AATCC 8 or 116 wet/dry crocking 🔥 CA TB 117-2013 ⚠ ASTM D4157-02 Wyz Abrasion (Heavy Duty Upholstery) ★ ASTM D3511 Pilling | <ul style="list-style-type: none"> pass pass pass pass pass |
| Design/Colours | Mette Krebs Petersen | |
| Subject to changes and colour differences | | |

